



In this issue

165th General Meeting **P.1**

Industry Reports **P.1**

Industry Reports Continued **P.2**

Surveying Education Reports **P.3**

Demand Study **P.3**

Surveying & SIS Traineeships **P.4**

SMIC Training & Scholarship Program **P.4**

165th General Meeting

The 165th General Meeting of the Surveying & Mapping Industry Council of NSW was held on Friday 5th April 2019 at the ISNSW Offices.

Industry Reports

The following information may be of interest to members of our constituent organisations and the general public.

ACS & CSN

- Monthly webinars – Consulting Surveyors NSW has been running a series of webinars for members with a focus on improving the bottom line for their businesses
- Advocacy – ACS responded quickly to the disparaging comments made by Alan Jones on cadastral surveying, providing a letter to Mr Jones outlining the role surveyors play and their importance in the nation's economy
- ACS have seen a growth over the last 12 months with more younger people buying businesses and have thus created a new membership group called 'Emerging' for those who have been in business for less than 5 years
- Dates and locations for the ACS Roadshow 'Legal Update' in May have been confirmed – please see ACS website for details
- Surveying 2019, the national surveying congress, will be held in Brisbane on June 6-7
- Michelle Blicavs is representing NSW on the Artibus Innovation Property Services industry reference committee. A review of the VET training packages for surveying (cert II to Adv Diploma) will be conducted during FY19-20. Diverse representation from across industry will be required to help review and update the content of the training packages

AIMS

- AIMS held a Business Planning meeting in Brisbane recently, which focused on the future of surveying
- 64 surveyors attended the most recent Mudgee Seminar
- Annual Conference will be held in Sydney on August 15-16 2019

BE A TAFE NSW TEACHER

Calling all qualified technical and graduate/registered surveyors and spatial information professionals

If you have:

- The Certificate IV in Training and Assessment [TAE40116] or capacity to complete this with the support of TAFE NSW
- A qualification in either; the Certificate III in Surveying and Spatial Information Services (or)

- Certificate IV in Spatial Information Services (or) Certificate IV in Surveying (or) Diploma of Spatial Information Services (or) Diploma of Surveying
- A minimum 5 years current relevant industrial experience after completion of a Certificate III qualification/s

Join a dynamic training environment in Newcastle, Riverina, Ultimo or Wollongong.
Email your resume and qualifications to Shane Judd, Industry Relationship Lead shane.judd@tafensw.edu.au



TAFE NSW

Industry Reports Continued ...

APAS

- The annual conference was a success, 280 delegates attended Cypress Lakes Pokolbin for two days of presentations. There was a 50/50 makeup of government surveyors and private industry surveyors.
- The 2020 Annual conference will be held at the Fairmont Resort in Leura on the 23-24 of March 2020
- The Government Surveyors Dinner 2019 will be hosted by TAFE NSW and held on the 24 October. Venue to be determined

CSN

- Consulting Surveyors National launched the latest comprehensive research into the future of Australia's surveying profession on Wednesday 27 March. Prepared by BIS Oxford Economics, 'Determining the Future Demand, Supply and Skills Gap for Surveying and Geospatial Professionals' provides a thorough analysis of the critical and far reaching issues surrounding the demand and supply of surveying and geospatial professionals.
- Surveying 2019, the national surveying congress, will be held in Brisbane on June 6-7.

ISNSW

- In response to the Opal Tower scandal, ISNSW has written to the Minister for Innovation & Better Regulation in support of the Shergold Weir report which recommends compulsory CPD for all involved in the construction industry

NSW Surveying Taskforce

- Work experience applications are now open for 2019, with seven submissions currently underway
- Ongoing social media content has been produced and promoted via Instagram and Facebook, with user engagement increasing alongside the number of followers to both accounts

SMMF

- The SMMF group met on Monday April 1 in conjunction with the annual APAS Conference.
- Some of the common themes from the reports submitted included; trialling of new technologies (LiDAR, Drones), recruitment, recent success of candidate surveyors at the BOSSI examinations and POSI initiatives within varying jurisdictions.

SSSI

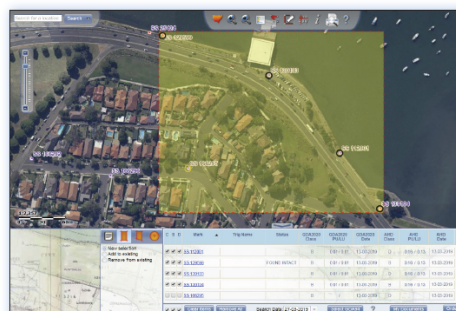
- Locate19 – Successfully held in Melbourne on April 8-10 with 900 delegates in attendance over the 3 days
- APSEA's – The Regional Industry APSEA's are now open for 2019. Simply go to www.apsea.org.au to enter
- SEASC2019 – Planning for the South East Asian Survey Conference in Darwin in August 2019 is continuing. You can check out the event website at: <https://sssi.org.au/events-awards/seasc-2019-darwin>. Abstracts must close on April 30

Surveyor General

- GDA2020 implementation
 - 10 Feb 2019:** CORSnet-NSW, available in GDA2020 and GDA94
 - 1 April 2019:** SCIMS test version launched at APAS conference (see image for screen shot of new environment)
 - 1 July 2019:** SCIMS public release planned in GDA2020 and GDA94
 - July-Dec 2019:** Delivery Services (Clip and Ship, Incremental Feed) release
 - 1 Jan 2020:** Legislative changes are in-train for adoption 01 Jan 2020
- OSG, Survey Operations & EICU Sydney office at Queens Square moved recently to Level 14 of the DFSI McKell building in Haymarket
- POSI – new resources are being developed to help facilitate and educate industry;
 - POSI Strategy Report Template
 - Survey Mark Audit Schedule
 - POSI workflow diagram
 - Examples of small & large scale applications



SCIMS Online
GDA2020 upgrade, July 2019



Additional and Improved Features

	Current	Additional
Datum	GDA94	GDA2020
Quality	Class Order	Class Local Uncertainty Positional Uncertainty
Height	AHD71	AHD71 Ellipsoidal Height

Map Legend

SCIMS Mark types (Colour codes refer to the assigned accuracy "Class")

Mark	Name	Class	Positional Uncertainty	Local Uncertainty	AHD Updated	Mark Status*	
SS	PM	TS	CR	MM	CP	GB	Established GDA2020 - Accurate AHD71
SS	PM	TS	CR	MM	CP	GB	Established GDA2020 - Accurate AHD71 Only
SS	PM	TS	CR	MM	CP	GB	Accurate AHD71 Only
SS	PM	TS	CR	MM	CP	GB	Accurate AHD71 - Approx. GDA2020
SS	PM	TS	CR	MM	CP	GB	Approx. GDA2020 Only
SS	PM	TS	CR	MM	CP	GB	Unknown

Established GDA coordinates are assigned accuracy class 3A, 2A, A, B, C or D
Accurate AHD heights are assigned accuracy class L2A, LA, LB, LC, LD, 2A, A or B

* Where available, the Mark Status is appended to the Mark Number in the map

BOSSI

- Assessments of Candidate Competency Assessments for Land and Mining were recently held in February and March. As a result of the assessments, 18 Land and 2 Mining Candidate surveyors were presented with their Certificates of Competency on April 5, displaying an increase in certificates presented over recent years with 25 being presented in 2017 (11 in April) and 13 in 2018 (8 in April).
- BOSSI will be holding its annual Candidates Workshop 24-25 May at Kurri Kurri TAFE. This workshop gives financially enrolled Candidate Surveyors the opportunity to discover first-hand the requirements for each assessment.

Surveying Education Reports

TAFE

- Six applications received as a result of the recent Surveying Part Time Casual Teacher recruitment campaign
- As a valued partner of TAFE NSW and expert in her field, Narelle Underwood has been selected by TAFE NSW to participate in a thought leadership report that is being developed on *The Future of Work*
- TAFE Enterprises and the IEC SkillsTeam, Sydney Region have met with Dr Glenn Campbell to finalise arrangements for the practical face to face training for students enrolled through the University of Southern Queensland in Surveying and Spatial Science courses. TAFE Enterprises are working towards a proposal to be put forward to USQ very soon

UNSW

- The new UNSW3+ structure has meant that the annual 3rd year survey camp has moved from July to March. It was conducted over 5 days from March 18-22 in Berry. This year there were 8 x 3 groups. Practical exercises included; control surveys, detail/road set out and tunnel survey. For more information please read the APAS2019 paper prepared by Craig Roberts <https://www.apas.org.au/files/conferences/2019/The-Critical-Importance-of-Practical-Exercises-in-a-Modern-Surveying-Curriculum-Surveying-Curriculum.pdf> Into the future, we will need to succession plan for future camps. We are looking for assistance from the profession to ensure this very important hands-on camp is preserved in our program
- GMAT1110 – first year surveying course will become a suggested elective for first year civil students. This will ensure many more civil students can take surveying early in their program and hopefully consider changing or taking up the double degree

USQ

- The Honours project conference organisation is progressing well. Notification of the dates and format to students is currently underway. The key date for the conference presentations is September 25, where industry will be welcome to attend the student presentations at the Springfield campus. Currently there are 46 projects that have been accepted across a diverse range of topics, which is one of the highest numbers in recent years. In anticipation of a similar cohort for 2020, discussions with the profession about potential topics for next year have also begun, and staff will again look to hold a research workshop for industry to contribute ideas

Determining the Future Demand, Supply and Skills Gap for Surveying and Geospatial Professionals

On Wednesday 27 March CSN launched the latest comprehensive research into the future of Australia's surveying profession.

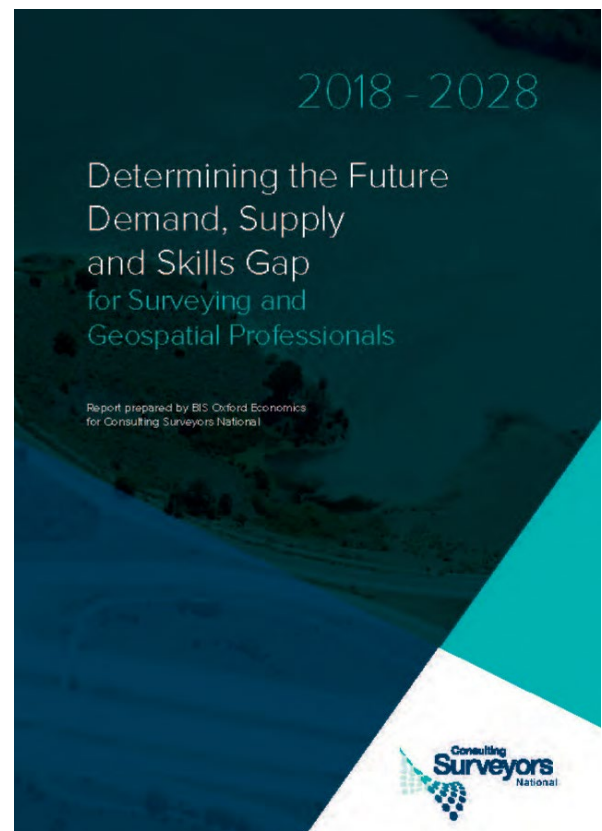
Prepared by BIS Oxford Economics, 'Determining the Future Demand, Supply and Skills Gap for Surveying and Geospatial Professionals' provides a thorough analysis of the critical and far reaching issues surrounding the demand and supply of surveying and geospatial professionals. These issues have a profound effect on the construction and property industry and Australia's present and future economy.

Held at the Holding Redlich offices in Sydney, the launch of this study attracted interstate industry and NSW government representatives, all keen to discuss the many implications and impacts of this research on the surveying profession.

Guest speaker Mr James Pearson, CEO of the Australian Chamber of Commerce and Industry formally addressed the gathering, highlighting the fact that private enterprise is the engine which really drives the economy and that reports are vital for business and government as evidence still matters.

A detailed overview of the results was presented by Mr Adrian Hart, Associate Director for Construction, Maintenance and Mining at BIS Oxford Economics, who conducted the research, followed by an excellent workshop facilitated by Mr Paul Rowlandson, Vice President of Consulting Surveyors National.

The discussion will be brought into focus at our National Congress in Brisbane 6-7 June and will help inform the Action Plan to be developed to ensure we make the most of the research, the opportunities and challenges it raises.





Available Traineeships

- Cert III Surveying & Spatial Information Services
- Cert IV Surveying
- Cert IV Spatial Information Services
- Diploma Surveying
- Diploma Spatial Information Services

How to Establish a Surveying & Spatial Information Services Traineeship in YOUR workplace

- Employer selects Australian Apprenticeship Centre (AAC)**
Contact Australian Business Apprenticeships Centre (ABAC)
Bree Milburn ABAC Account Manager 1300 652 236
bree.milburn@australianbusiness.com.au
- Recruitment process to select suitable candidate**
The traineeship must be established within 3 months of an employee starting employment with your company.
- Employer selects a Registered Training Organisation (RTO)**
Contact Australian Business Apprenticeship Centre or TAFE NSW
- AAC consultant assists employer to complete required paperwork**
- RTO in consultation with employer develops a Training Plan**
- Training Plan delivery commences**
- Apprenticeship Centre**
Tracks trainee progress
Actions payments to employer
- RTO and employer assess trainee as competent**
- Traineeship Completed**

Surveying & Spatial Information Services Traineeship Numbers

Commencements	2015	2016	2017	2018	2019 (as at 28 th Feb)
Cert III in Surveying & Spatial	4	8	12	11	2
Cert IV in Surveying	2	3	2	6	0
Cert IV in Spatial	8	6	1	7	1
Diploma in Surveying	0	1	0	1	0
Total:	14	18	15	25	3

If your company is looking to hire new staff please investigate how a trainee may benefit your business.

SMIC Training Scholarship Program

SMIC in conjunction with TAFE NSW offer a scholarship program for potential part-time teachers in Surveying and Spatial Information who are studying towards their TAE40110 Certificate IV in Training & Assessment. This qualification is a pre-requisite for teaching at TAFE. The scholarships are to a value of up to one thousand dollars.

Eligibility Criteria

- Australian citizen or permanent resident of Australia
- Made an application for or is enrolled in TAE40110
- Haven't received the scholarship previously
- Hold a recognised surveying qualification

Selection Criteria

- Meet eligibility criteria
- Academic merit
- Reasons for undertaking TAE40110
- Demonstrated teaching ability and aptitude
- Career direction, aspirations and goals
- Teaching qualities
- Motivation and attitude

Applications for the next round close **Friday 9 August 2019**.

For further information and application forms please refer to the Education Options tab under Services on our website www.smicnsw.org.au or email us at smic@smicnsw.org.au

Keep up to date, ask questions, or share information with SMIC by joining:



LinkedIn



Facebook



The Chair - SMIC NSW
Level 14, McKell Building,
2-24 Rawson Place
Sydney NSW 2000
Email: smic@smicnsw.org.au
www.smicnsw.org.au